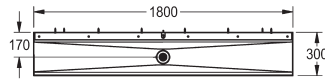
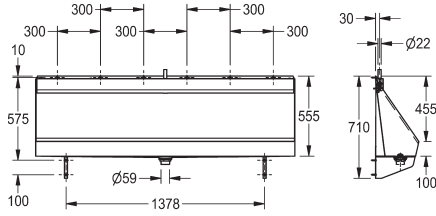
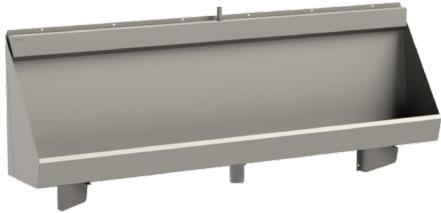


## KWC

### CENTINEL 1800mm urinal with concealed sparge pipe

Model line: URINALS | **CEN180C**



#### **CEN180C**

1800mm centinel urinal with concealed sparge pipe

Manufactured from 1.2mm thick grade 1.4301 (304) stainless steel with a satin polish finish. Designed with the waste outlet positioned centrally within the urinal. Supplied complete with a 2" Domed waste, concealed sparge pipes, sparge pipe cover, interconnecting pipework, 13.5 litre cistern, downpipe and trap cover.

The recommended height for fixing the cisterns is 750 - 950mm, from the underside of the cistern to the top return of the urinal. All urinals are screw fixed to the wall through fixing holes in the top flange together with separate wall mounted brackets which support the base of the unit.

#### **Technical data**

Material	Stainless steel
Gross weight	31kg
Overall dimensions	1800 x 300 x 555 mm (w x h x d)
Material thickness	1.2mm
Surface finish	Satin
Type of flushing	Water flushed
Waste size	50mm
Water inlet	Concealed
Water outlet	Concealed
Cistern	13.5L Cistern F3049