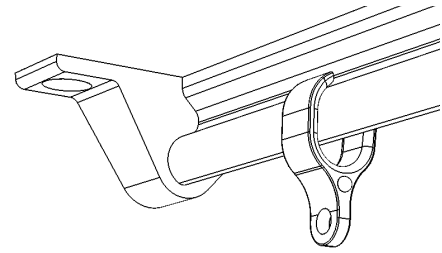


Mounting Description Curtain Rail Ceiling

The curtain rail is designed to resist suicidal attempts. When weight is applied the runners release from the the rail.



- Installation should be done so that the curtain rail fits tightl against the surface it is mounted against. Uneven surfaces should be avoided. After installation check that no objects, wire, or string can be inserted between the rail and the wall/ceiling.

- The Curtain rail should always be installed with an end stop at each end of the rail.

- Make sure that the rail is mounted with the straight side of the profile facing the wall (or window), (same side as the screw holes).
- See Example 1 and 2

- The Curtain rail must be fitted with countersunk security screws. The holes are adapted for screws with diameter of 5 mm and 10 mm head, fill all of them. Make sure that the screw head does not protrude from the rail.

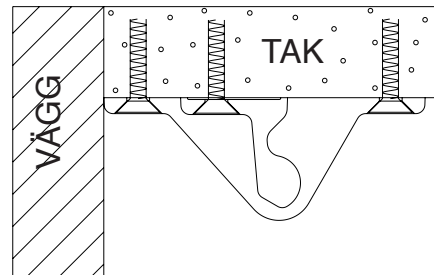
- Two rails shall not be mounted with profiles facing each other. If so, a cavity is created.
- See Example 3.

- When the rail is cut to the desired length, the distance to the nearest screw holes from the end will vary. Cut the rail so that the distance between the nearest countersunk hole and end stop shall not exceed 185 mm. No part of a countersunk hole covered by the endstop shall be visible.

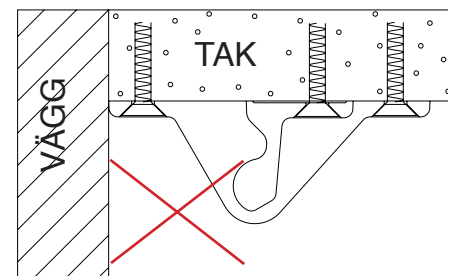
- If this is unachievable, shift the distances between screw holes and end stops (Make them asymmetric). The rail is pre-drilled with a CC of 200 mm.
- See Example 4.

- The end stops must cover at least 5 mm of the rail.

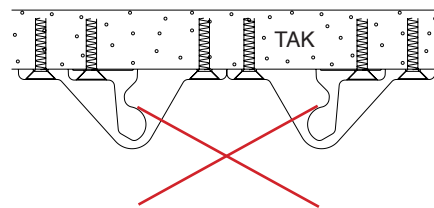
The installation instructions must be followed to obtain the test results conducted by SP Technical Research Institute of Sweden.



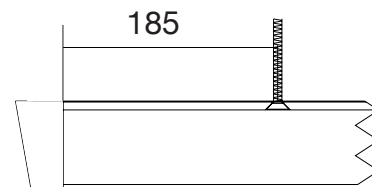
1. Correct placement facing the wall



2. Incorrect placement facing the wall



3. Incorrect placement of two rails facing each other.



3. Distance between the nearest countersunk hole and end stop does not exceed 185 mm. No part of a countersunk hole covered by the endstop shall be visible.